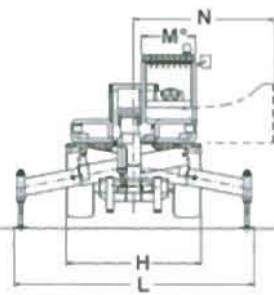
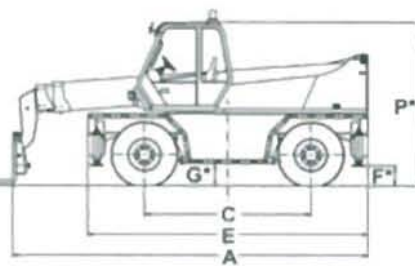
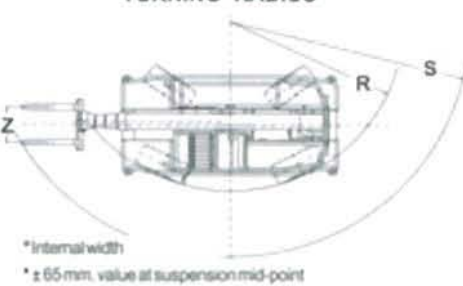


ROTO 50.16 EVS

| | | |
|---|----|-------|
| A | mm | 6 380 |
| C | mm | 2 970 |
| E | mm | 5 030 |
| F | mm | 360 |
| G | mm | 410 |
| H | mm | 2 400 |
| L | mm | 4 285 |
| M | mm | 940 |
| N | mm | 2 390 |
| P | mm | 2 950 |
| R | mm | 4 050 |
| S | mm | 5 150 |
| Z | mm | 850 |

DIMENSIONS

TURNING RADIUS


*Internal width
* ± 65 mm, value at suspension mid-point

WEIGHT

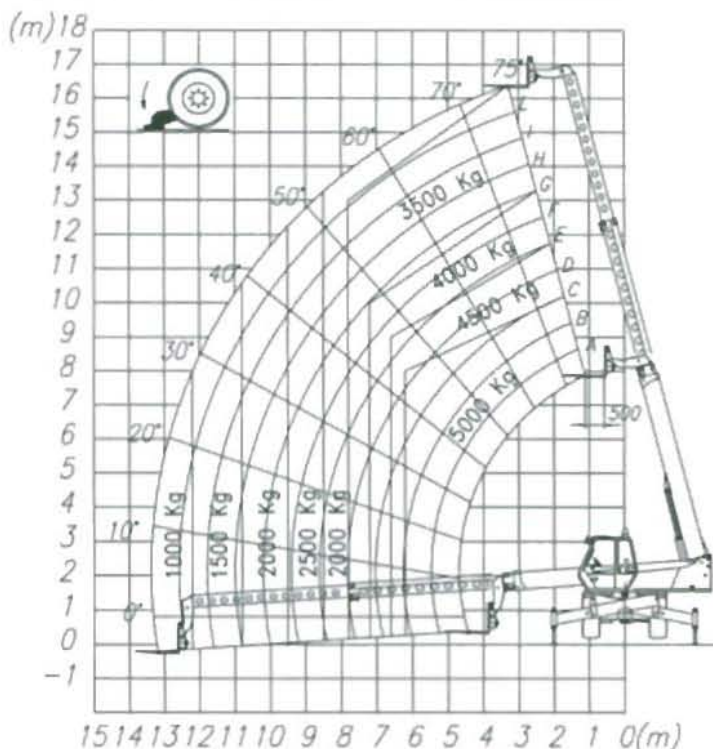
Operating weight (including forks) kg 14.200

PERFORMANCE ON STABILISERS

| | | |
|---------------------------------------|-----|------------|
| Rated maximum load | kg | 5.000 |
| Maximum lift height | mm | 16.400 |
| Maximum forward reach | mm | 13.400 |
| Maximum lift height with rated load | mm | 10.200 |
| Maximum forward reach with rated load | mm | 6.200 |
| Maximum load at maximum lift height | kg | 3.500 |
| Maximum load at maximum forward reach | kg | 1.000 |
| Tearout with 800 l bucket | kg | 4.230 |
| Drawbar pull (dynamometer) | kg | 7.800 |
| Total carriage rotation | deg | 140 |
| Upperstructure slewing | | Continuous |

TRAVEL SPEED

| | | |
|------------|------|----|
| Low range | km/h | 11 |
| High range | km/h | 40 |


CE

Dimensions conform to EN23411.
Electronic "5 in 1" joystick control.
Instrument panel includes: rev counter/speedometer, hour meter, fuse box, fuel contents, engine coolant temperature, annunciator panel (air filter blocked, hydrostatic oil temperature and level, engine oil pressure, engine coolant temperature, park brake).

SAFETY

Stability safety warning system with audible and visual alarms, plus 'motion-lock' system preventing further aggravating motion and use of stabilisers.
Computerised Slew Safety system (CSS) ensures complete utilisation of available lifting capacity independent of outrigger position.
All hydraulic cylinders are fitted with lock valves.
Audible reverse alarm.
Seat belt. Fire extinguisher mounting brackets.

BOOM

Three telescopic sections, sliding on easily adjustable anti-friction pads.
Extension cylinder protected by internal mounting.

INDEPENDENT OUTRIGGERS

Four independently controlled hydraulic outriggers.

SUSPENSION

Hydropneumatic levelling suspension.
Lateral correction 9° (16%), longitudinal correction 5° (9%), non-simultaneous.

PALLET FORKS

Length 1.200 mm. Section 130 x 45 mm. Separation manually adjustable from 450 to 1050 mm.

STEERING

Power assisted 4 wheel steering with automatic resynchronisation when misaligned.
Three steer modes:
- Front wheel steer
- 4 wheel steer
- Crab steer

ENGINE

6 cylinder reduced emission Turbo Diesel (97/68/CE), electronic direct injection, water cooled, power 95 kW (129 HP) at 2400 rpm (ECE 24-03).

TRANSMISSION

Closed circuit hydrostatic with automatic and continuous speed control through variable displacement piston motor.
Electrically selected two-speed gearbox.

HYDRAULIC SYSTEM

Single 'Load-Sensing' variable displacement axial piston pump.
Maximum flow: 120 lpm
System pressure: 210 bar
Hydraulic suction filter: 125 microns 'For-Life'
Hydraulic return filter: 25 microns

ELECTRICAL SYSTEM

12V, 155Ah battery and 65A alternator.

SERVICE CAPACITIES

Hydraulic oil: 130l
Diesel: 155l
Hydrostatic oil: 12l
Engine oil: 14l
Engine coolant: 12l

TYRES

18-22.5 16 PR on both axles

OPTIONS

Rear window wash/wipe system.
Windscreen load guard. Rear axle differential lock.

MERLOUK LTD

The Paddocks, Headlands Business Park
Salisbury Road, Ringwood, Hampshire BH24 3PB
Tel: (0)1425-480806 - Fax: (0)1425-477478
E-mail: sales@merlo.co.uk www.merlo.co.uk

MERLO SPA

12020 S. DEFENDENTE DI CERVASCA (CN) - ITALY
Tel: 0171-614111 - Fax 0171-614100 - Telex 220236 Merlo I
www.merlo.com - E-mail: info@merlo.com