



Telescopic Handler
with rotating turret
ROTO P 50.10 XS

5000 kg max lift capacity
10,2 metres max lift height
400° rotating boom
7,85 metres outreach from
machine centre



NEW

ENGINE: 4 cylinder, water cooled, direct injection, turbocharged diesel engine.
84 Kw (114 HP) at 2400 rpm (DIN 70020).

TRANSMISSION: Hydrostatic closed circuit type, variable delivery pump and variable displacement motor. 2 speed gear box, electrohydraulically operated, permanent 4 wheel drive.

STEERING AND BRAKES: 4 steering wheels with "load sensing" control : three steering modes: all wheel steering, front wheel steering, crab steering. Hydraulically operated disc brakes on all four wheels. Mechanical parking disc brake, hydraulic negative control. Tyres 16/70x20" 14 PR.

SUSPENSIONS: hydropneumatic, allowing self levelling and manual frame levelling.

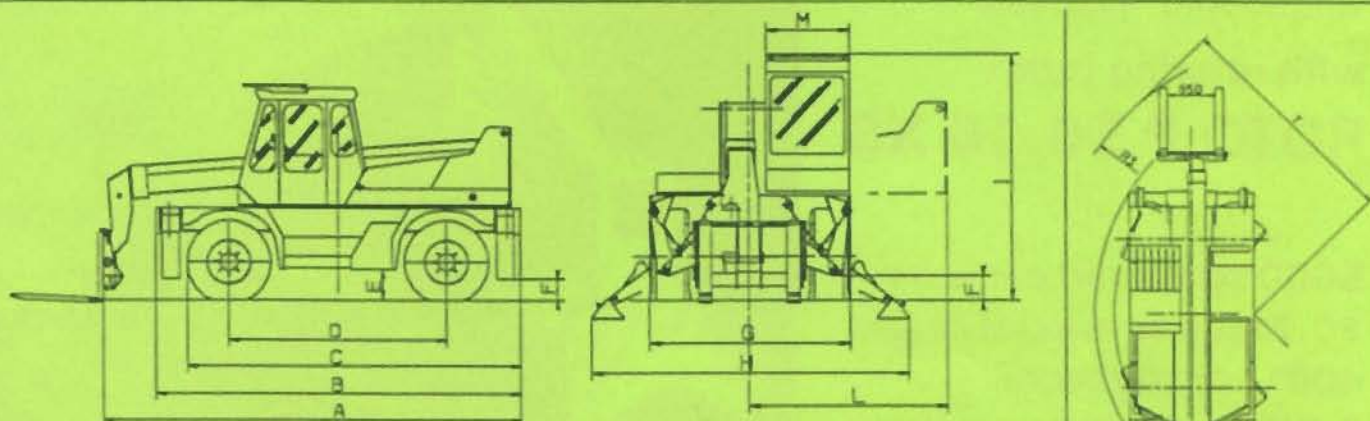
HYDRAULIC CIRCUIT: Axial piston pump, variable delivery, load sensing control.
Max oil delivery: 120 lt/min. Operating pressure: 210 bar.



The ROTO P 50.10 XS is the ideal telescopic handler to operate where it is necessary to lift heavy loads in a few room.

The quick attach carriage adds rapid interchange of attachments to the ROTO P 50.10 XS high lift capacity

Equipped with the special tunnel ribs handler, the ROTO P 50.10 XS is the most suitable way to shorten tunnel steel arches laying time.



A	overall length to front carriage	mm 5315	F	stabilizer's ground clearance	mm 275	T	= 4220 mm
B	overall length to stabilizers	mm 4630	G	overall width	mm 2240	R1	= 3920 mm
C	overall length to front wheels	mm 4230	H	maximum width stabilizers on	mm 3530	R2	= 4300 mm
D	wheel base	mm 2758	I	overall height to fops grid	mm 2768	R3	= 5230 mm
E	minimum ground clearance	mm 400	L	rotation overall dimension	mm 2195		

LIFT CAPACITIES WHILE ROTATING

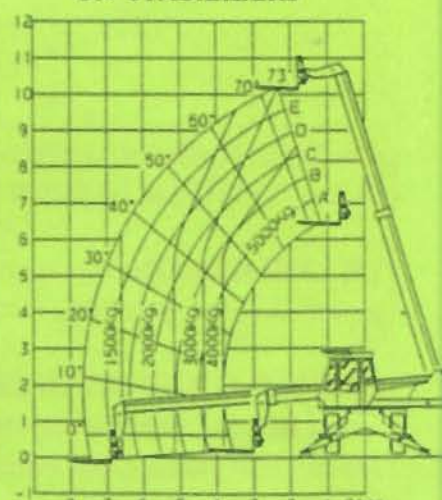
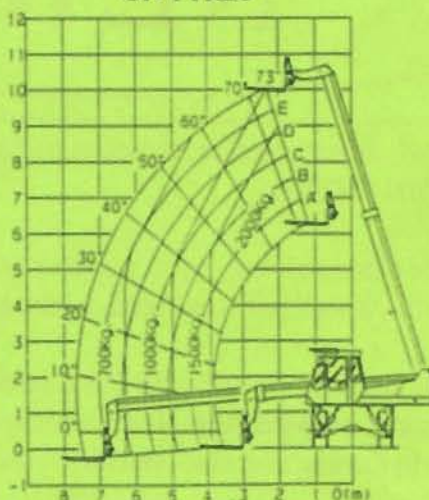
ON TYRES

ON STABILIZERS

Lift performances

on stabilizers

Maximum lift capacity	Kg. 5000
Maximum lift height	mm 10200
Maximum reach	mm 7850
Maximum height at full capacity	mm 8500
Maximum capacity at full height	Kg 4000
Maximum capacity at full reach	Kg 1500
Turret rotation	400° (360°+40°)
Towing capacity	Kg. 7800
Travel speed	(km/h)
- on site (1° gear)	11
- on road (2° gear)	40



MERLO

DFSEH0261

MERLO S.p.A. Industria Metallmeccanica
 12020 S. Defendente di Cervasca - Cuneo - ITALY
 Tel 0171/85671 - Fax 0171/320009 - Telex - 220236
 HEINRICH-S - MERLO - TELESKOPTTECHNICK - Brema
 MERLO FRANCE - Parigi - MERLO UK Ltd-Ringwood
 MERLO IBERICA S.A. - Barcellona
 MERLO UK - Ringwood