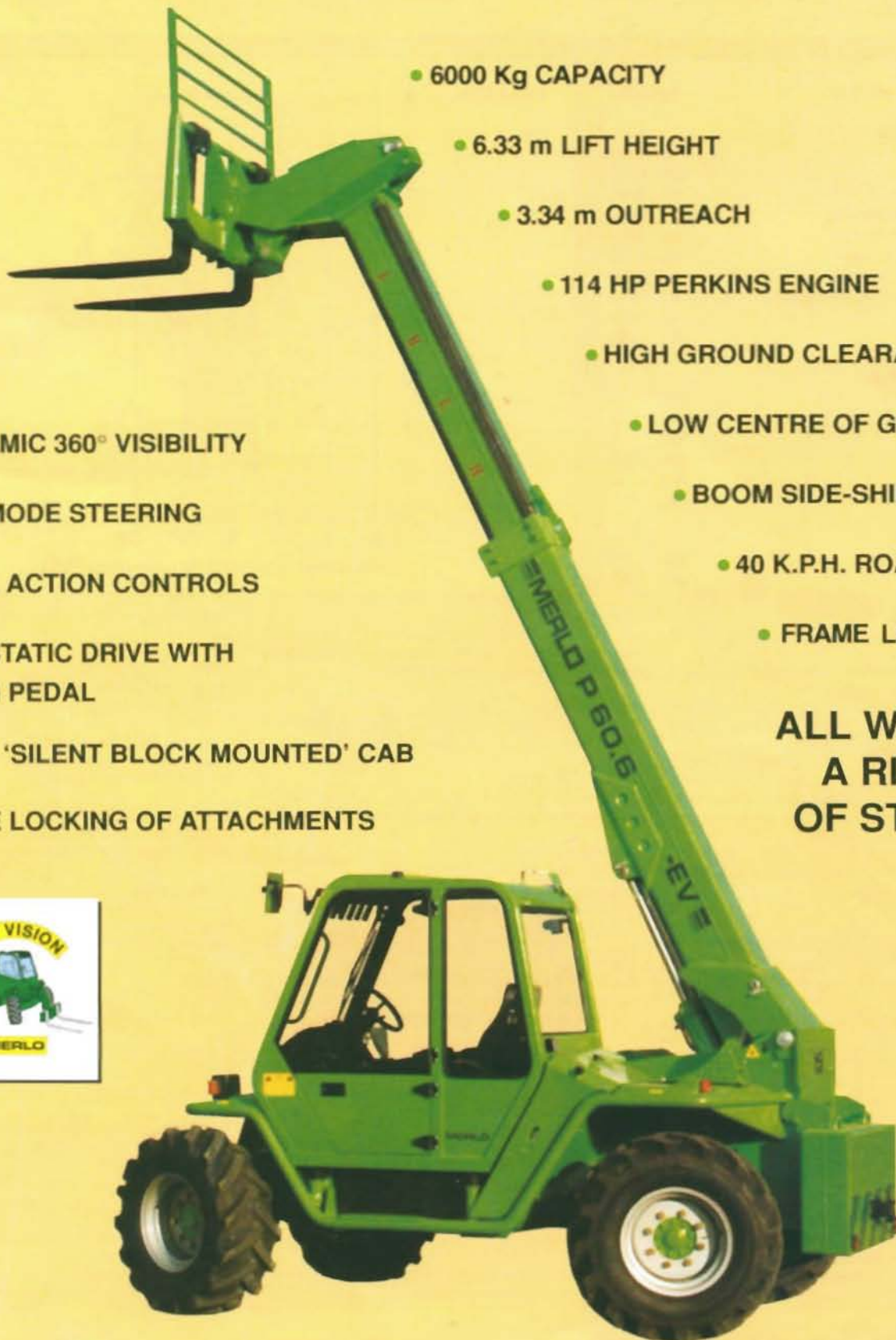




THE EUROPEAN LEADER IN HANDLER DESIGN



- 6000 Kg CAPACITY
- 6.33 m LIFT HEIGHT
- 3.34 m OUTREACH
- 114 HP PERKINS ENGINE
- HIGH GROUND CLEARANCE
- LOW CENTRE OF GRAVITY
- BOOM SIDE-SHIFT
- 40 K.P.H. ROAD SPEED
- FRAME LEVELLING
- PANORAMIC 360° VISIBILITY
- THREE MODE STEERING
- DOUBLE ACTION CONTROLS
- HYDROSTATIC DRIVE WITH INCHING PEDAL
- LUXURY 'SILENT BLOCK MOUNTED' CAB
- REMOTE LOCKING OF ATTACHMENTS

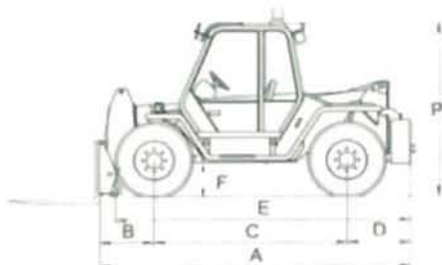
ALL WITHIN  
A RING  
OF STEEL



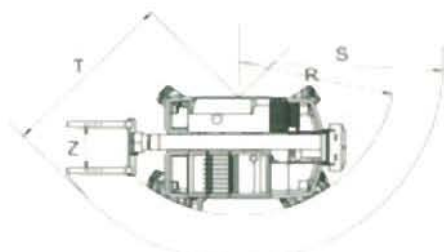
PANORAMIC P 60.6 EVS

A	mm	4320
B	mm	795
C	mm	2650
D	mm	875
E	mm	4060
F	mm	480
H	mm	2220
M	mm	930
P	mm	2440
R	mm	3810
S	mm	4450
T	mm	3450
Z	mm	850

## DIMENSIONS



## OUTSTANDING MANOEUVRABILITY



## WEIGHTS

Machine weights with forks kg 8680

## PERFORMANCES

Max. lift capacity	kg	6000
Max. lift height	mm	6330
Max. reach	mm	3340
Max. height at full capacity	mm	4900
Max. reach at full capacity	mm	1050
Max. capacity at full height	kg	4000
Max. capacity at full reach	kg	2000
Tear-out force with 800 lt bucket (SAE J732/80)	kg	6340
Drawbar pull	kg	7820
Carriage rotation	deg	143

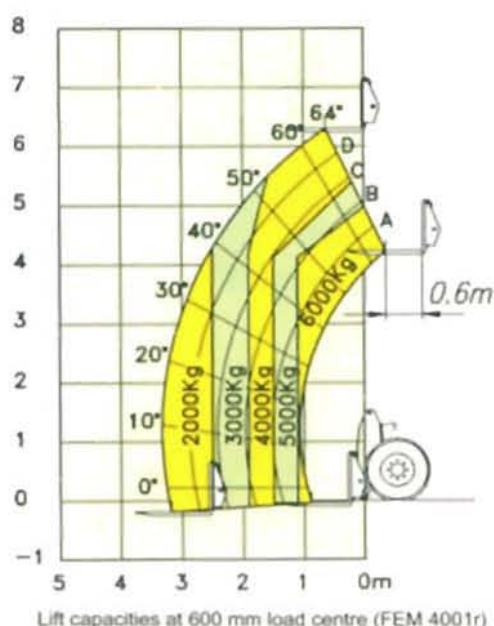
## OPERATING TIMES

Boom lift	sec	9
Boom lower	sec	10
Boom extend	sec	8
Boom retract	sec	5.5
Full carriage tilt	sec	5
800 lt bucket dump	sec	1.5

## TRAVEL SPEED

1st gear	kph	11
2nd gear	kph	40

## P 60.6 EVS



## OPERATOR'S CAB

Structure complies with EEC directives 86/295 (ROPS) and 86/296 (FOPS).

The cab is mounted on rubber antivibration blocks and fitted with noise dampening panels.

Front screen is fitted with a wiper and can be opened for additional ventilation. Boom and carriage are operated by "2 in 1" joystick levers.

Instrumentation includes: Tachometer/Revolution counter, hour meter, fuse box, check-control panel showing blocked engine air filter, hydrostatic oil level and temperature, engine oil pressure, coolant temperature, parking brake warning light.

Centralized pressure test gauge. Also as standard is a cab heater/demister/pressurisation system and a courtesy light.

## SAFETY SYSTEMS

A safe load warning device activates both audio and visual signals and locks overloading actions.

Automatic lock of frame levelling when boom exceeds the safety angle.

Safety lock valves are incorporated in all hydraulic cylinders.

A reversing bleeper is fitted and an audible warning is given if the handbrake is left on.

Remote engine hood lock.

## BOOM SIDE-SHIFT

A MERLO patented chassis side-shift is fitted allowing +/- 110 mm of carriage side-shift with boom fully retracted or +/- 180 mm if boom is fully extended.

## BOOM

A two section boom made from high yield steel and telescoping on anti friction externally adjusted pads. The extension cylinder is protected by mounting inside the boom.

## CARRIAGE

A "TAC-LOCK" carriage (for attachment of equipments from inside the cab), is fitted with two hydraulic service lines making a double acting service.

## FRAME LEVELLING

A hydraulic activated tilt device allows chassis and boom levelling under any ground conditions.

## PALLET FORKS

1200 mm long, section 150 x 60 mm. Centre to centre fork distances, hand adjustable, from 450 to 1050 mm.

## STEERING

Hydraulically powered, three modes:

- All wheel steer
- Front wheel only steer
- Crab steer

## ENGINE

4 cylinder PERKINS 1004-4 T turbo charged Diesel engine with direct injection and water cooling 84 kW (114 Hp) at 2400 rpm (DIN 70020).

## TRANSMISSION

Hydrostatic closed circuit type with automatic stepless speed regulation. Inching pedal. Two speed gearbox. Motor at variable displacement for 0-11 kph (1st gear) and 0-40 kph (2nd gear).

Permanent four wheel drive through differential and hub reduction gears.

Front axle is mounted rigidly, the rear axle oscillates. Dropped hubs of the crown and pinion reduction type for improved ground clearance.

## BRAKES

Hydraulically activated disc brakes on all four wheels, mounted on differential output shafts.

Mechanical parking disc brake, self adjusting, on main propshaft.

## SERVICE HYDRAULICS LOAD-SENSING

Single axial piston pump with variable delivery, "LOAD-SENSING" control.

Maximum flow: 120 l/min

Operating pressure: 230 bar

125 micron "FOR LIFE" strainer on suction line

40 micron filter on return line.

## ELECTRICS

12 V system with 110 Ah battery and 65 A alternator.

Full road lighting and flashing beacon.

## CAPACITIES

Hydraulic oil: 95 l - Diesel fuel: 155 l

Hydrostatic oil: 8 l - Engine oil: 7.5 l

Coolant: 12.5 l

## TYRES

16/70 x 20" 14 PR semi-industrial profile.

Mounted on 8 stud disc rims (DIN 70361).

## OPTIONS

A wide range of options includes:

- Rear differential lock.
- Rear PTO.
- "4 in 1" electroproportional joystick.
- Roof window and rear screen wipers.
- Front screen guard.
- Pre-arrangement for rear excavator and mixing shovel.

## ATTACHMENTS

A comprehensive range of attachments for the construction industry, agriculture and industrial applications is available.

Contact your local dealer for details.

# MERLO

MERLO UK LIMITED  
82 Christchurch Road - RINGWOOD - HAMPSHIRE - BH24 1DR - ENGLAND  
Tel: (0425) 480806 - Fax: (0425) 477478  
MERLO SPA Industria Metallmeccanica  
12020 S. DEFENDENTE DI CERVASICA (CN) - ITALY  
Tel: +39 171-85671 - Fax: +39 171-320009 - Telex 220236 MERLO I