



**TELESCOPIC HANDLER**

# **PANORAMIC P60.10XS**



**PANORAMIC** means:

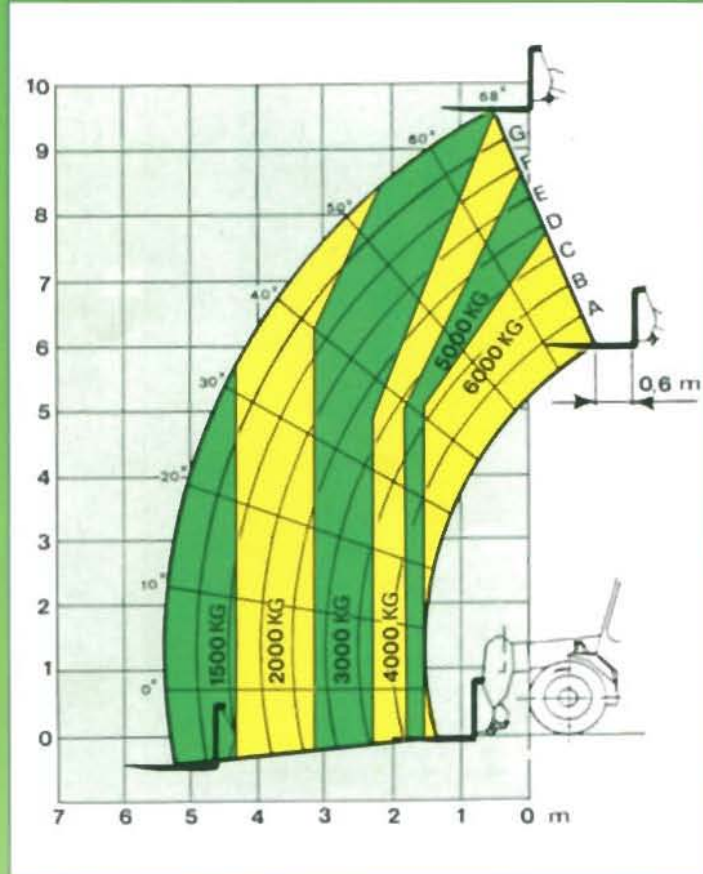
- All-round visibility
- Unbeatable stability
- Easy service access



**MERLO**



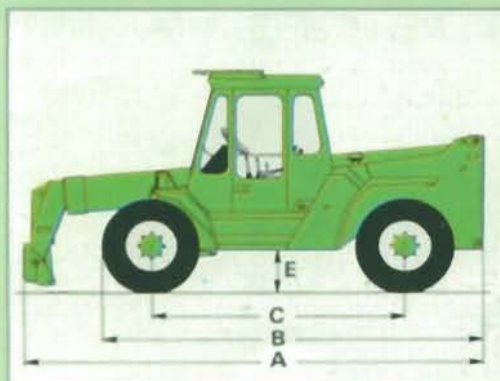
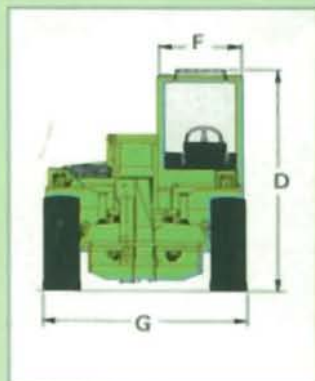
LIFT CAPACITY



LIFT CAPACITIES ARE INTENDED AT 600 MM LOAD CENTER, MACHINE STANDSTILL ON FLAT, COMPACTED GROUND

| LIFT PERFORMANCES                                 |     |      | OPERATING TIMES      |      | sec.        |
|---|-----|------|----------------------|------|-------------|
| Max lift capacity                                 | kg. | 6000 | Boom lift            | sec. | 13,5        |
| Max lift height                                   | mm  | 9550 | Boom lower           | sec. | 13          |
| Max reach   | mm  | 5500 | Boom extend          | sec. | 13          |
| Max height at full capacity                       | mm  | 7800 | Boom retract         | sec. | 10          |
| Max reach at full capacity                        | mm  | 1600 | Full carriage tilt   | sec. | 5           |
| Max capacity at full height                       | kg. | 4000 | 800 lt bucket dump   | sec; | 1,5         |
| Max capacity at full reach                        | kg. | 1500 | <b>TRAVEL SPEED</b>  |      | <b>Km/h</b> |
| BREAK-OUT FORCE with 800 lt bucket to SAEJ732/80) | kg. | 6550 | — on site (1st gear) | Km/h | 11          |
| TOWING CAPACITY                                   | kg. | 7800 | — on road (2nd gear) | Km/h | 32          |

DIMENSIONS & WEIGHTS



|                                    |    |      |
|------------------------------------|----|------|
| A Overall length to front carriage | mm | 5360 |
| B Overall length to front wheels   | mm | 4650 |
| C Wheelbase                        | mm | 2810 |
| D Overall height to FOPS grid      | mm | 2450 |
| E Min. ground clearance            | mm | 470  |
| F Inside width of cab              | mm | 920  |
| G Overall width                    | mm | 2200 |
| Carriage tilt angle                | °  | 145  |
| Machine weight (with forks)        | kg | 9460 |

**ENGINE**

4 cylinder, water cooled,  
direct injection,  
Diesel engine, 61,5 Kw (84 Hp) at 2400  
rpm (DIN 70020)

**TRANSMISSION**

Hydrostatic closed circuit type, stepless  
speed regulation.  
Variable delivery pump direct coupled to  
Diesel engine.  
Variable displacement motor direct  
flanged to gear box.  
2-speed gear box, hydraulic operated.  
Permanent 4-wheel drive, through  
differential and hub reduction gear.  
Rear differential, prearranged for diff lock.  
Steering axles, front one rigid, rear one  
oscillating.  
Hub reduction gears, crown & pinion  
type, to obtain a greater ground  
clearance.

**STEERING**

4-wheel steering, hydrostatic power;  
3 steering modes, selection from cab:  
— all wheel steering  
— front wheel steering  
— crab steering.

**BRAKES**

Hydraulic operated disc brakes on all 4  
wheels (differential output shaft).  
Mechanical parking disc brake,  
selfadjusting, on main propshaft.

**TIRES**

16/70 x 20" 14 ply,  
Single mounted on 8 stud disc rim (DIN  
70361).

**ELECTRICS**

12 Volts, 155 Ah battery and 55 Amp  
alternator.  
Full road lighting.  
Flashing beacon.

**HYDRAULICS**

Single axial piston pump at variable  
delivery, load-sensing control.  
Max oil delivery : 120 ltr/min.  
Operating pressure : 230 bar.  
125 micron "for life" strainer on suction  
line; 40 micron filter on return line.

**TANKS CAPACITIES**

|               |            |
|---------------|------------|
| Hydraulic oil | : 100 ltr  |
| Fuel          | : 180 ltr  |
| Coolant       | : 12.5 ltr |
| Hydrostatic   | : 8 ltr    |
| Engine oil    | : 7.5 ltr  |

**BOOM**

2-section telescopic boom, high yield  
steel, sliding on anti-friction adjustable  
pads.  
Extension cylinder, placed inside the  
boom.

**CARRIAGE**

Quick-attack carriage, cab operated.  
2 service lines to carriage (one service at  
double effect).

**PALLET FORKS**

1200 mm long, section 150 x 60 mm.  
Center to center fork distance, hand  
adjustable, from 450 to 1050 mm.

**BOOM-CARRIAGE SIDE SHIFT**

Patented system which allows to side  
shift the carriage (and therefore forks or  
any attachment) by :  
+/- 110 mm boom retracted  
+/- 250 mm boom fully extended

**SAFETY DEVICES**

Safe load indicator; visual and audible  
warning activated by a signal from a load  
sensor housed in the rear axle when a  
condition of stability limit is approached.  
Safety lock valves on boom lift, extension,  
carriage tilt and side-shift cylinders.

**OPERATOR CAB**

Cab structure complies with EEC  
directives 86/295 (ROPS) and 86/296  
(FOPS).  
Toughened glasses on all four sides and  
roof to give all-round vision.  
Front opening window complete with  
wiper.  
Boom & carriage control lever of joystick  
type.  
Dashboard featuring : hour meter, fuse  
box, warning light for :  
coolant temperature - battery charge -  
engine oil pressure - crab steering -  
sideshift - parking brake.

Hydraulic service pressure gauge to be  
plugged to various check points for an  
instant check of the hydraulic system  
efficiency.

**OPTION**

Frame levelling device, with automatic  
lock when boom overcomes safety angle.  
Cab options : de-luxe seat; pressurizing &  
heating system; roof & rear wipers; hand  
accelerator.  
Safe load indicator with automatic "cut-  
off" system.  
Safe load indicator with continuous  
monitoring of machine forward stability.  
Rear differential lock.  
Engine sump guard; engine hood lock.

**ATTACHMENTS**

A complete range of front & rear  
attachments for construction industry,  
agriculture and industrial applications is  
available.  
Require the catalogue for details.  
Tailor made attachments upon request.

MERLO RESERVES THE RIGHT TO CHANGE SPECIFICATIONS WITHOUT PRIOR NOTICE. ILLUSTRATIONS SHOWN MAY INCLUDE OPTIONS & ATTACHMENTS.

**MERLO**

Merlo S.p.a.  
Industria Metallmeccanica  
12020 S. Defendente di Cervasca - Cuneo - ITALY  
Tel. (0171) 85671 - Fax (0171) 320009  
Telex 220236

Merlo France  
7 rue des Chiers - 78310 Coignieres - FRANCE  
Tel. (1) 34 61 16 69 - Fax (1) 34 61 73 97 - Telex 698 186

Merlo Iberica S.A. Ctra. Nacional 11 Km. 606,40 Nave 8  
08780 Pallesa (Barcelona) - ESPANA  
Tel. (93) - 680 00 65 (5 linee) - Fax (93) - 680 18 14

Heinrichs-Merlo Teleskoptechnik Vertriebsgesellschaft mbH  
Cunhavener Str. 7-POSTFACH 150411 - D-2800 Bremen 15 (Überseehafen)  
DEUTSCHLAND - Telefon: 0421/3965730 - Telefax: 0421/3965731