



**MERLO**

COMPANY  
WITH QUALITY SYSTEM  
CERTIFIED BY DNV  
— ISO 9001 —

# panoramic P 40.16 K



# TECHNICAL FEATURES



## Pallet forks

■ Floating type with a length of 1200 mm and section 130 x 50 mm. Centre to centre fork distances manually adjusted up to 1010 mm.

## Engine

■ Low emission (EURO 2) 4 cylinder Deutz turbo Diesel engine with direct injection and water cooling, 74,9 kW at



2400 rpm (97/68/CE).

## Hydrostatic transmission

■ The two-range hydrostatic transmission ensures automatic and continuous speed regulation from 0 to maximum speed, simply by operating the accelerator pedal, with the following advantages:

- The best possible use of the engine power curve at environmental temperatures of up to +40 °C.
- At low running speed the power potential is double that of conventional transmissions.
- Powerful dynamic braking.
- Permits stopping and re-starting on slopes of up to

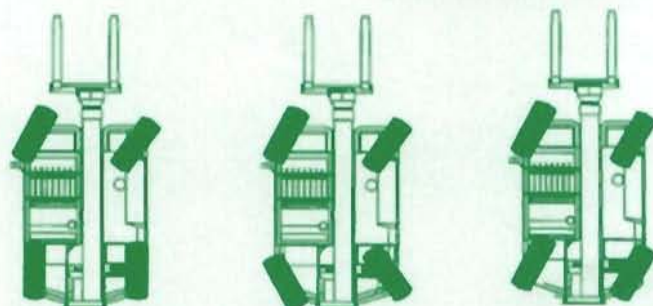
## Steering

■ Hydraulically powered with automatic wheel resynchronisation in case of misalignment.

• Crab steer (for lateral shifting of the machine without any change in longitudinal alignment).

■ Three steering modes:

- Front wheel steer (for road travel).
- All wheel steer (to obtain a reduced steering radius).



50%, without using the brakes.

■ An "Inching-Control" makes it possible to precisely vary travel speed independently of engine speed.

■ Thanks to the "Finger-Touch" system it is possible to reverse direction even when the machine is moving, without the operator having to remove his hands from the steering wheel.

■ Permanent four-wheel drive traction, with drop portal axles to ensure excellent ground clearance.

## Brakes

■ Hydraulically activated disc brakes on all four

wheels, mounted on differential output shafts.

■ Hydraulic "Fail-safe" parking disc brake on main propshaft.

## Service hydraulics

■ Single variable delivery axial piston pump, with "Load-Sensing" control.

- Maximum flow: 120 l/min
- Operating pressure: 220 bar
- 125 micron "For-Life" strainer on suction line
- 25 micron filter on return line.

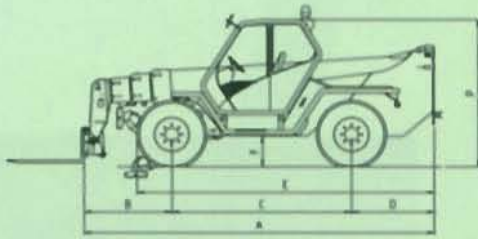
## Electrics

■ 12 V system with 100 Ah battery and 65 A alternator.

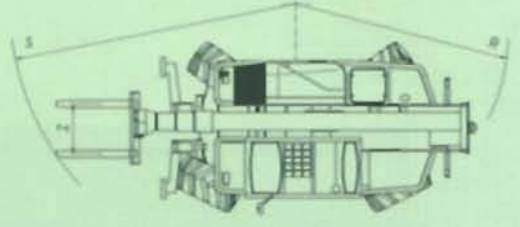
■ Full road lighting and flashing beacon.

A	mm	5.575
B	mm	1.385
C	mm	2.875
D	mm	1.315
E	mm	4.790
F	mm	480
H	mm	2.400
L	mm	2.600
M	mm	995
P	mm	2.510
R	mm	4.050
S	mm	4.990
Z	mm	850

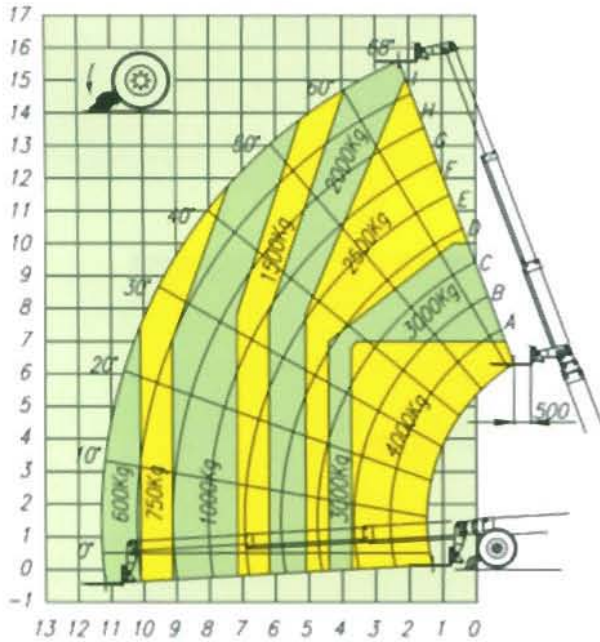
DIMENSIONS



OUTSTANDING MANOEUVRABILITY

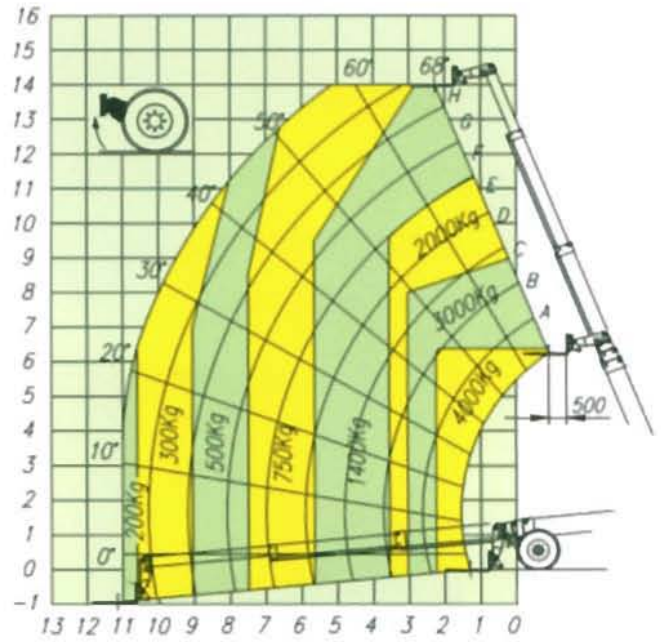


ON STABILISERS



According to EN 1459 annex B standard

ON TYRES



Lift capacities at 500 mm load centre

Capacities

- Hydraulic oil: 95 l
- Diesel fuel: 155 l
- Hydrostatic oil: 12 l
- Engine oil: 8,5 l
- Coolant: 12 l

Tyres

- 405/70-24 14 PR on both axles, mounted on 8 stud disc rims (DIN 74361).

Weights

Machine weights with forks	kg	10300
----------------------------	----	-------

Performance

Max. lift capacity	kg	4000
Max. lift height	mm	15600
Max. reach	mm	11370
Max. lift height at full capacity	mm	7000
Max. reach at full capacity	mm	3730
Max. capacity at full height	kg	2000
Max. capacity at full reach	kg	600
Carriage rotation	deg	140
Tear-out force with 800 l bucket	kg	4970
Drawbar pull	kg	7800

Speed

1st gear	kph	16
2nd gear	kph	40

FEATURES AND OPTIONS

	STANDARD	OPTIONS
Boom side-shift	✓	
Frame levelling	✓	
Two hydraulic service lines at the boom end	✓	
"Tac-Lock" attachment locking system	✓	
"5 x 1" electronic joystick		✓
Crane function remote control		✓
Front independent stabilisers	✓	
Air conditioning		✓
Overload lock-out system	✓	
Rear differential lock		✓
"Load-Sensing" hydraulic pump	✓	
Roof window wiper		✓
Cab roof mounted working lights		✓
Pneumatic suspension seat		✓
Prerarrangement for attachments requiring two services (eg mixing shovel)		✓
Prerarrangement for aerial platform and Space System		✓
Anti-theft system with immobilising device		✓
405/70-24 14PR tyres	✓	
18-22.5 16PR tyres		✓