

panoramic

30.9 K

28.9 K

35.7 K

30.7 K

28.7 K



THE RANGE

PANORAMIC K

WITH BOOM SIDE-SHIFT

WITHOUT BOOM SIDE-SHIFT

MODEL		30.7 K	30.9 K*	35.7 K	28.7 K	28.9 K
WEIGHT						
Total operating weight (with forks)	kg	6900	7250	6920	6500	7050
PERFORMANCE						
Rated maximum load	kg	3000	3000	3500	2800	2800
Maximum lift height	mm	7030	9200	7030	6950	8700
Maximum forward reach	mm	3620	5920	3620	3580	5950
Lift height at full capacity	mm	7030	6200	7030	6950	5500
Reach at full capacity	mm	1470	1800	1250	1550	1800
Capacity at full forward reach	kg	1150	600	1250	1100	600
Capacity at full lift height	kg	3000	2700	3500	2800	1500
Tear-out force with 800 l bucket	kg	4230	4230	4230	4300	4230
Drawbar pull	kg	5850	5850	5850	5330	5330
Carriage rotation	deg	140	140	140	140	140
Engine	4 cylinder low emission Perkins 1004.42 (97/68/CE)					
Power	61.5 kW at 2400 rpm (ISO 3046/1)					
SPEED						
1 st gear	kph	7	7	7	7	7
2 nd gear	kph	25	25	25	25	25

* P 30.9 K without optional stabilisers

Side-shift with boom extended

P 30.7 K	± 190 mm
P 30.9 K	± 265 mm
P 35.7 K	± 190 mm

Frame levelling

P 30.9 K	± 10%
P 35.7 K	± 10%

OPTIONS

- Cab mounted working lights
- Turbo charged engine with speed up to 40 kph⁽¹⁾
- Pneumatic seat
- Rear differential lock
- Prearrangement for attachments requiring two hydraulic services (e.g. concrete mixer)
- Air conditioning
- Stabilisers on P 30.9 K (see load chart overleaf)

⁽¹⁾ Turbostar version

PANORAMIC	30.7 K	30.9 K	35.7 K	28.7 K	28.9 K
A mm	4360	4380	4360	4170	4230
B mm	1010	1030	1010	880	960
C mm	2750	2750	2750	2700	2700
D mm	600	600	600	570	570
E mm	3920	3920	3920	3960	3960
F mm	480	480	480	565	565
H mm	2220	2220	2220	2230	2230
M mm	995	995	995	995	995
P mm	2470	2470	2470	2465	2465
R mm	3810	3810	3810	3700	3700
S mm	4570	4570	4570	4740	4740
T mm	3560	3560	3560	3560	3560
Z mm	850	850	850	850	850

SAFETY DEVICES

- An overload warning device activates both audible and visual signals and blocks further overloading actions.
- Automatic lock of frame levelling when boom exceeds a preset safety angle.
- All boom and lifting hydraulic cylinders are fitted with pilot-operated check valves.

BOOM

Two telescopic sections (three on P 28.9 K and P 30.9 K), made of high yield steel, each sliding on adjustable anti-friction pads.

CAB

- The high yield steel frame conforms to ROPS (ISO 3471) and FOPS (ISO 3449) standards.
- The internal width is 995 mm.
- Boom movements are controlled with a "4 in 1" joystick control.

HYDRAULIC SYSTEM

• Gear pump, with operating pressure of 210 bar and maximum flow of 91 lpm.

ENGINE

Low emission 4 cylinder Diesel engine located longitudinally on the right side of the chassis (Merlo patent).

HYDROSTATIC TRANSMISSION

- Two speed range gear box electrically operated.
- An "Inching-Control" makes it possible to precisely vary travel speed independently of engine speed.
- With the "Finger-Touch" system it is possible to change driving direction even when the machine is moving, without the operator having to remove his hands from the steering wheel.

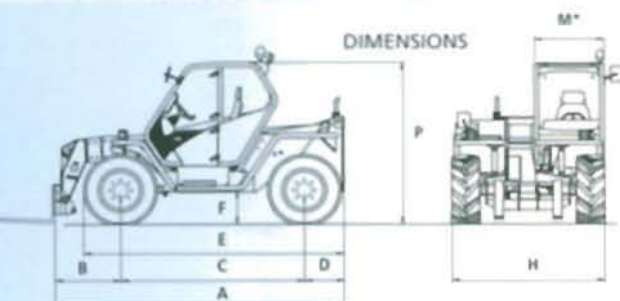
STEERING

All four wheels are steered, with auto-synchronisation realigning the steering wheels should they become misaligned:

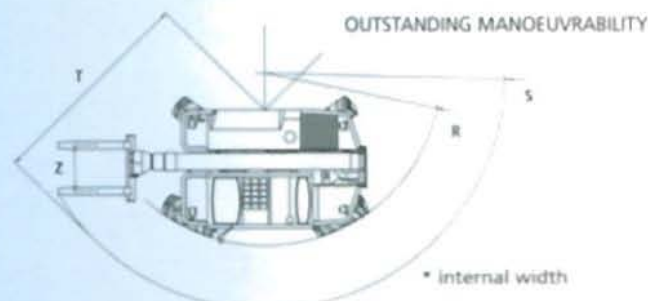
- Front wheel steer.
- Four wheel steer.
- Crab steer.

CARRIAGE

- The "Tac-Lock" quick attachment



DIMENSIONS



OUTSTANDING MANOEUVRABILITY

* internal width

fitting system is hydraulically controlled from the cab.

- Two boom-end mounted hydraulic lines are provided, which can be combined as a single double acting service.

FORKS

• Floating type with a length of 1200 mm and section 125 x 45mm. Centre to centre fork distances manually adjusted from between 450 up to 1010mm.

BRAKES

• Hydraulic service disc brakes are fitted to all four wheels, operating on the differential output shafts.

- A "Fail-safe" spring-operated, hydraulic release, disc parking brake is fitted to the main transmission output shaft.

ELECTRICS

- 12V system with 100Ah battery and 65A alternator.
- Full road lighting and flashing beacon.
- Electric cable inside the boom to supply a electric socket (12 V - 10 A) at its end (not on P 28.9 K and P 30.9 K).

CAPACITIES

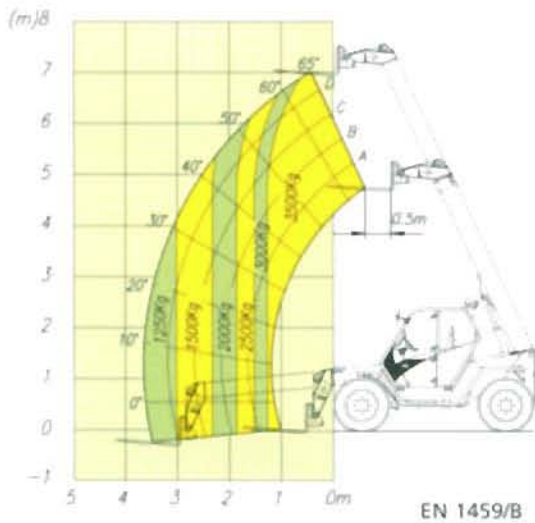
- Hydraulic oil: 95 l
- Diesel fuel: 155 l
- Hydrostatic oil: 12 l
- Engine oil: 8,5 l
- Coolant: 12 l

TYRES

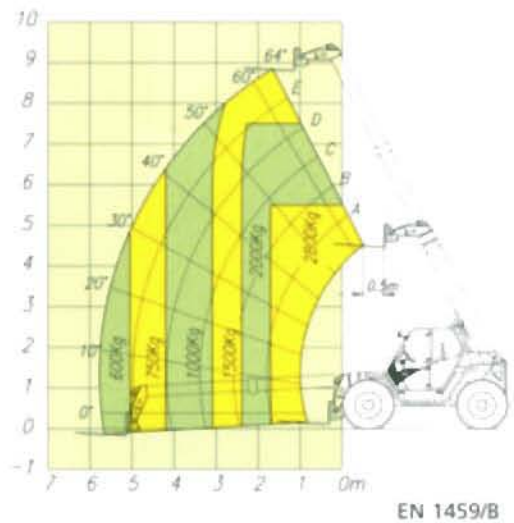
- 40S/70-24 14PR (P 28.7 K and P 28.9 K)
- 400/70-20 14PR (P 30.7 K, P 30.9 K and P 35.7 K)

PANORAMIC K

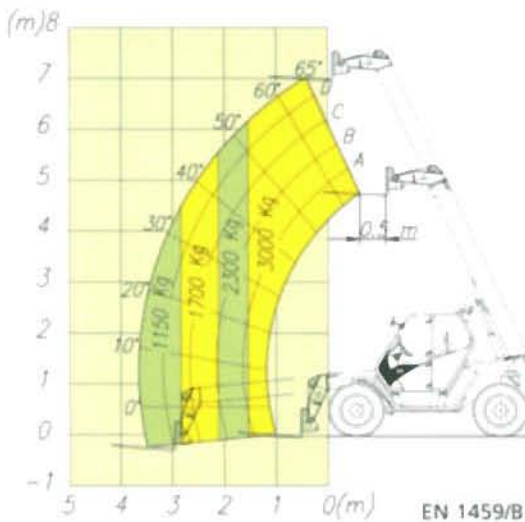
P 35.7 K



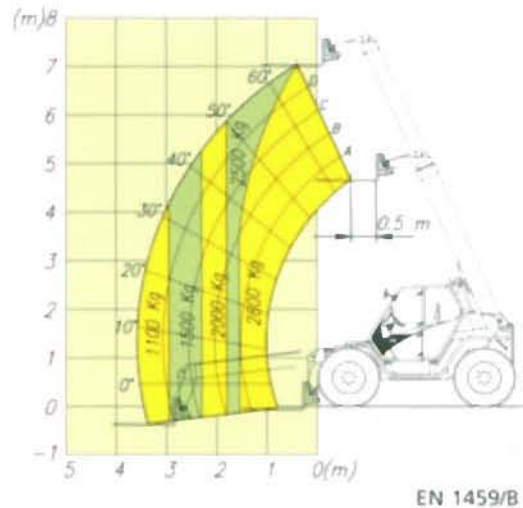
P 28.9 K



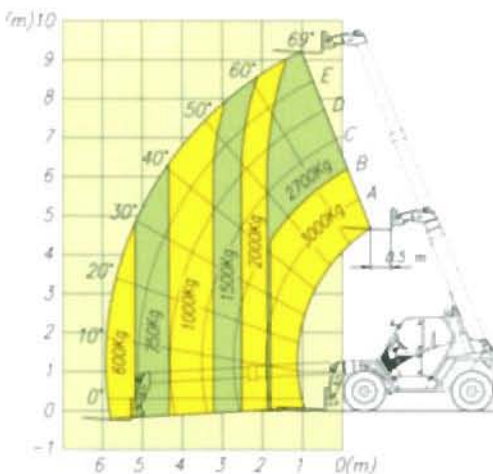
P 30.7 K



P 28.7 K



P 30.9 K



P 30.9 K on stabilisers (optional)

