



**THE EUROPEAN LEADER IN HANDLER DESIGN**

**PANORAMIC 360° VISIBILITY**

**3000 KG CAPACITY**

**UPTO 40 K.P.H. ROAD SPEED**

**6.95 M LIFT HEIGHT**

**THREE MODE STEERING**

**3.66 M OUTREACH**

**DOUBLE ACTION CONTROLS**

**84 HP OR 114 HP PERKINS ENGINE**

**HYDROSTATIC DRIVE**

**LUXURY 'SILENT BLOCK MOUNTED' CAB**

**INCHING PEDAL**

**REMOTE LOCKING OF ATTACHMENTS**

**HIGH GROUND CLEARANCE**

**LOW CENTRE OF GRAVITY**

**CHASSIS SIDE-SHIFT**

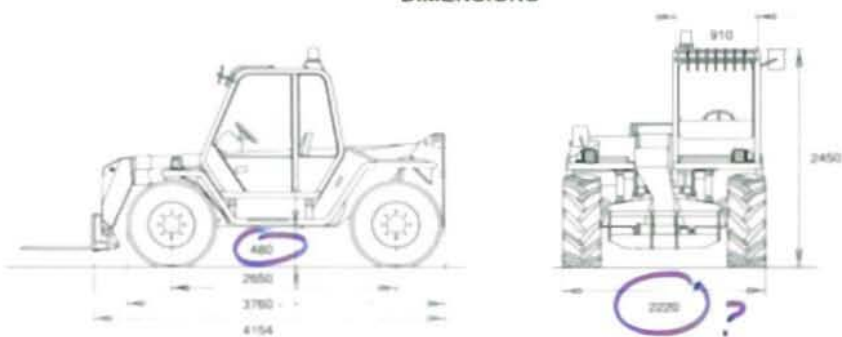
**OPTIONAL ELECTRONIC JOYSTICK**



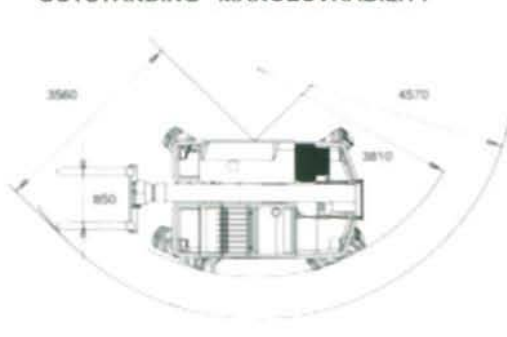
**ALL WITHIN  
A RING OF STEEL**

**PANORAMIC P 30.7 EV**

## DIMENSIONS



## OUTSTANDING MANOEUVRABILITY



## WEIGHTS

Machine weight with forks kg 6440

## PERFORMANCES

Max lift capacity kg 3000  
 Max lift height mm 6950  
 Max reach mm 3660  
 Max height at full capacity mm 6950  
 Max reach at full capacity mm 1450  
 Max capacity at full height kg 3000  
 Max capacity at full reach kg 1150  
 Tear-out force with 800 lt bucket (SAE J732/80) kg 4230  
 Drawbar pull kg 5850  
 Carriage rotation deg 140

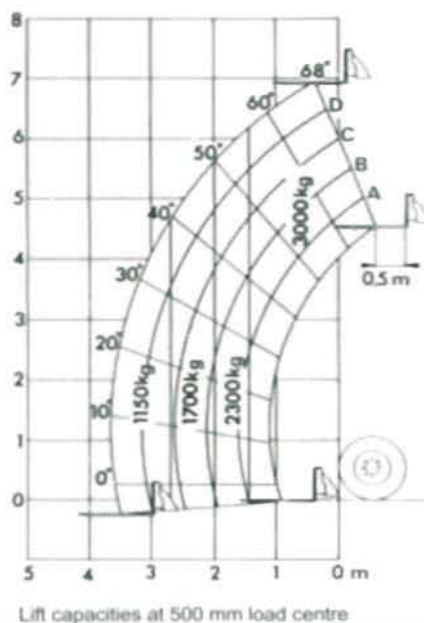
## OPERATING TIMES

Boom lift sec 9  
 Boom lower sec 7  
 Boom extend sec 7  
 Boom retract sec 6  
 Full carriage tilt sec 5  
 800 lt bucket dump sec 1.5

## TRAVEL SPEED

Working speed (1st gear) km/h 7  
 Road speed (2nd gear) km/h 25

## LIFT CAPACITY P 30.7 EV



## OPERATOR'S CAB

Structure complies with EEC directives 86/295 (ROPS) and 86/296 (FOPS). The cab is mounted on rubber antivibration blocks and is fitted with noise dampening panels.

Front screen is fitted with a wiper and can be opened for additional ventilation.

Boom and carriage is operated by two "2 in 1" joystick levers.

Instrumentation includes: Tachometer/Revolution counter, hour meter, fuse box, check-control panel showing oil level, blocked engine air filter, hydrostatic oil level, engine oil pressure, coolant temperature, parking brake warning light.

Also as standard is a cab heater/demister/pressurisation system and a courtesy light.

## SAFETY SYSTEMS

A safe load warning device giving both audio and visual signals is activated by a load sensor housed in the rear axle. It automatically prevents any further boom motion before overload; only action reducing overbalancing tendency is permitted.

Safety lock valves are incorporated into the boom lift-telescope, carriage tilt circuits and side shift cylinders to avoid accidents in the event of a hydraulic system failure. A reversing bleeper is fitted and an audible warning is given if the handbrake is left on.

## BOOM SIDE-SHIFT

A MERLO patented chassis side-shift is fitted permitting +/- 110 mm of carriage side-shift with boom fully retracted or +/- 190 mm if boom is fully extended.

## BOOM

A two sections boom made from high yield steel and

telescoping on anti friction externally adjusted pads. The extension cylinder is protected from damage by mounting inside the boom.

## CARRIAGE

A "TAC-LOCK" carriage (for attachment of equipments from inside the cab), is fitted with two hydraulic service lines (one double acting service).

## STEERING

Hydraulically powered, three modes selected from the cab, provide:

- All wheel steer
- Front wheel only steer
- Crab steer

## ENGINE

4 cylinder PERKINS 1000 series Diesel engine with direct injection and water cooling 62 kw (84 Hp) at 2400 rpm (DIN 70020).

## TRANSMISSION

Hydrostatic closed circuit type with stepless speed regulation.

A variable delivery pump directly connected to the Diesel engine drives a fixed displacement motor directly flanged to the two speed gearbox.

Permanent four wheel drive through differential and hub reduction gears.

Front axle is mounted rigidly, the rear axle oscillates. Dropped hubs of the crown and pinion reduction type for improved ground clearance.

## BRAKES

Hydraulically activated disc brakes on all four wheels, mounted on differential output shafts.

Mechanical parking disc brake, self adjusting, on main propshaft.

## SERVICE HYDRAULICS

Gear pump.

Maximum flow: 82 lt/min

Operating pressure: 210 bar

125 micron "FOR LIFE" strainer on suction line

40 micron filter on return line.

## ELECTRICS

12 volt system with 110 Ah battery and 55 Amp alternator. Full road lighting and flashing beacon.

## CAPACITIES

Hydraulic oil: 95 lt Diesel fuel: 155 lt

Hydrostatic oil: 8 lt Engine oil: 7.5 lt

Coolant: 12.5 lt

## TYRES

16/70 x 20" 10 PR.

Mounted on 8 stud disc rims (DIN 70361).

## OPTIONS

A wide range of options includes:

Turbo charged engine 84 kw (114 HP) at 2400 rpm (DIN 70020).

40 kph high speed transmission. Front screen guard.

4 in "electroproportional" joystick.

Rear differential lock. Engine sump guard.

Roof window and rear screen wipers.

## ATTACHMENTS

A comprehensive range of attachments for construction industry, agriculture and industrial applications is available. Contact your local dealer for details.

# MERLO

MERLO UK LIMITED 62 Christchurch Road - RINGWOOD - HAMPSHIRE - BH24 1DR - ENGLAND Tel: (0425) 480806 - Fax: (0425) 477478

MERLO SPA Industria Metallomeccanica 12020 S. DEFENDENTE DI CERVASCA (CN) - ITALY Tel: +39 171-85671 - Fax: +39 171-320009 Telex: 220236 MERLO I