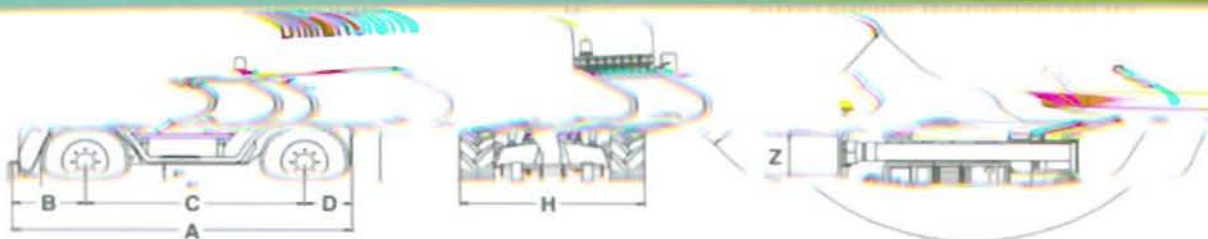


mm 4380
 A
 B
 C
 D
 H
 Z

* Internal width



WEIGHTS

Machine weights with forks kg 7350

PERFORMANCES

Max. lift capacity kg 2700
 Max. lift height mm 9180
 Max. reach mm 5930
 Max. height at full capacity mm 9180
 Max. reach at full capacity mm 1850
 Max. capacity at full height kg 2700
 Max. capacity at full reach kg 600
 Tear-out force with 800 l bucket kg 4230
 Drawbar pull kg 5850
 Carriage rotation deg 140

OPERATING TIMES

Boom lift sec 8.5
 Boom lower sec 7.5
 Boom extend sec 9
 Boom retract sec 8
 Full carriage tilt sec 5
 800 l bucket dump sec 1.5

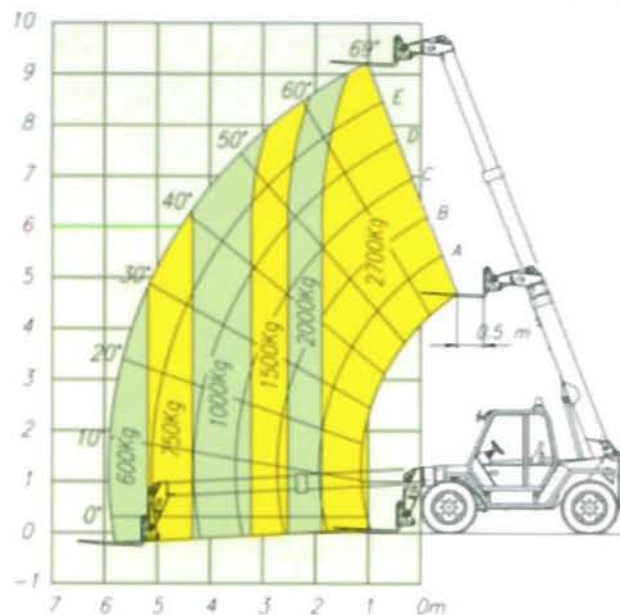
TRAVEL SPEED

1st gear kph 11
 2nd gear kph 40

P 27.9 EVT

Lift capacities
 at 500 mm load centre

FEM 4001r
 pr EN 1459 Annex B



OPERATOR'S CAB

Structure complies with EEC directives 86/295 (ROPS) and 86/296 (FOPS). The cab is mounted on rubber antivibration blocks and fitted with noise dampening panels. The seat is adjustable with cloth covering. Front and rear screens are fitted with wipers. Boom and carriage are operated by "4 in 1" joystick lever.

Instrumentation includes: Tachometer/Revolution counter, hour meter, fuse box, coolant liquid thermometer, check-control panel showing blocked engine air filter, hydrostatic oil level and temperature, engine oil pressure, coolant temperature, parking brake warning light. Centralized pressure test gauge. Also as standard is a cab heater/demister/pressurisation system and a courtesy light.

SAFETY SYSTEMS

A safe load warning device activates both audio and visual signals and locks overloading actions. Safety lock valves are incorporated in all hydraulic cylinders. A reversing bleeper is fitted. Engine hood lock. Fire extinguisher couplings in the cab. Safety belts.

BOOM

A three section boom made from high yield steel and telescoping on anti friction externally adjusted pads. The double extension cylinder is protected by mounting inside the boom.

BOOM SIDE-SHIFT

A MERLO patented chassis side-shift is fitted allowing ± 110 mm of carriage side-shift with boom fully retracted

or ± 265 mm if boom is fully extended.

CARRIAGE

A "TAC-LOCK" carriage (for attachment of equipments from inside the cab), is fitted with two hydraulic service lines making a double acting service.

FRAME LEVELLING

A hydraulic activated tilt device allows chassis and boom levelling under any ground conditions.

PALLET FORKS

1200 mm long, section 130 x 45 mm. Centre to centre fork distances, hand adjustable, from 450 to 1050 mm.

STEERING

Hydraulically powered with wheel automatic resynchronisation in case of disalignment. Three steering modes:
 - All wheel steer
 - Front wheel only steer
 - Crab steer

ENGINE

Low emission 4 cylinder PERKINS 1004-40T Turbo Diesel engine with direct injection and water cooling 80.4 kW at 2400 rpm (ECE R96). Anti-straw protection on oil and water radiators.

TRANSMISSION

Hydrostatic closed circuit type with automatic stepless speed regulation. Inching pedal. Two speed gearbox with hydraulic control. Permanent four wheel drive through differential and hub reduction gears.

Front axle is mounted rigidly, the rear axle oscillates. Dropped hubs of the crown and pinion reduction type for improved ground clearance.

BRAKES

Hydraulically activated disc brakes on all four wheels, mounted on differential output shafts. Fail-safe parking disc brake hydraulically controlled on main propshaft.

SERVICE HYDRAULICS

Gear pump. Maximum flow: 91 l/min. Operating pressure: 210 bar. 40 micron filter on return line.

ELECTRICS

12 V system with 110 Ah battery and 65 A alternator. Full road lighting and flashing beacon. Standard equipment includes 2 front lights and 1 rear light on the cab.

CAPACITIES

Hydraulic oil: 95 l
 Diesel fuel: 155 l
 Hydrostatic oil: 12 l
 Engine oil: 8.5 l
 Coolant: 12 l

TYRES

405/70-24 14 PR agricultural profile.

OPTIONS

Rear differential lock. Rear PTO. Air conditioning. Front screen guard.

MERLO

MERLO UK LTD - Paddocks Headlands Business Park - Salisbury Road
 RINGWOOD - HAMPSHIRE - BH24 3PB - ENGLAND
 Tel: (01425) 485806/470701 - Fax: (01425) 477478 - www.merlo.co.uk

MERLO SPA Industria Metalmeccanica - 12020 S. DEFENDEnte DI CERVASCA (CN) - ITALY
 Tel: +39 0171-614111 - Fax: +39 0171-614100 - Telex 220236 Merlo I - www.merlo.com - E-mail: info@merlo.com

MERLO



PANORAMIC P 27.9 EVT

Turbo Farmer