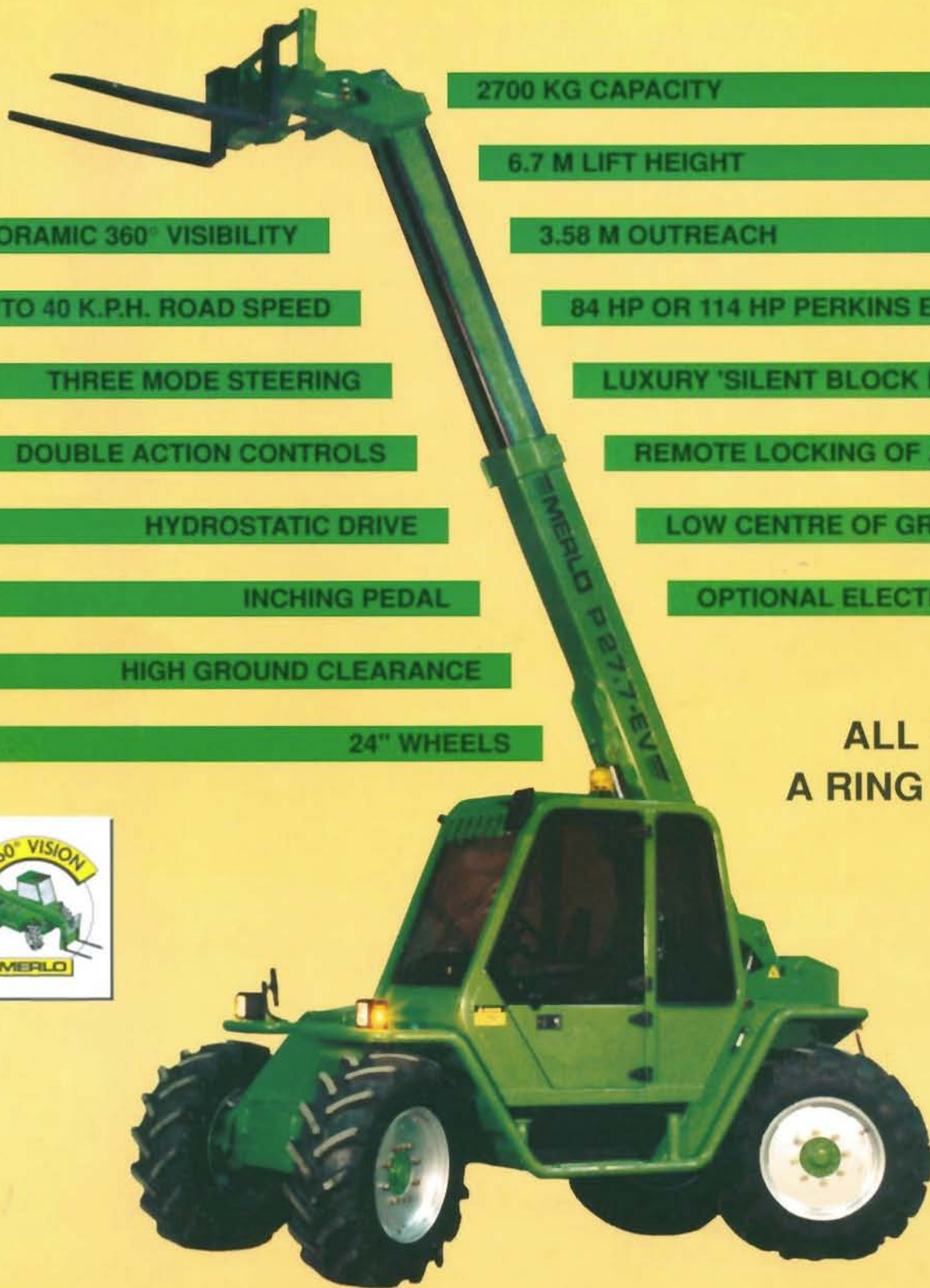




THE EUROPEAN LEADER IN HANDLER DESIGN



2700 KG CAPACITY

6.7 M LIFT HEIGHT

PANORAMIC 360° VISIBILITY

3.58 M OUTREACH

UPTO 40 K.P.H. ROAD SPEED

84 HP OR 114 HP PERKINS ENGINE

THREE MODE STEERING

LUXURY 'SILENT BLOCK MOUNTED' CAB

DOUBLE ACTION CONTROLS

REMOTE LOCKING OF ATTACHMENTS

HYDROSTATIC DRIVE

LOW CENTRE OF GRAVITY

INCHING PEDAL

OPTIONAL ELECTRONIC JOYSTICK

HIGH GROUND CLEARANCE

24" WHEELS

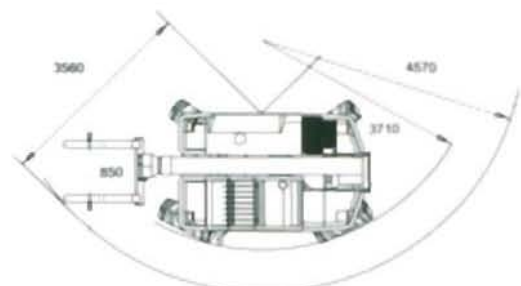
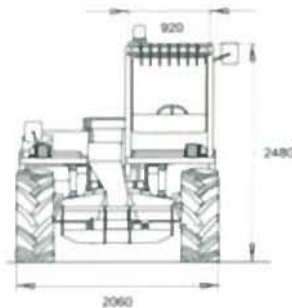
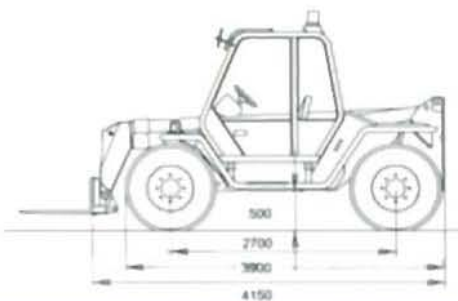
ALL WITHIN
A RING OF STEEL



PANORAMIC P 27.7 EV

DIMENSIONS

OUTSTANDING MANOEUVRABILITY



WEIGHTS

Machine weights with forks kg 6170

PERFORMANCES

Max lift capacity kg 2700
 Max lift height mm 6700
 Max reach mm 3580
 Max height at full capacity mm 6700
 Max reach at full capacity mm 1640
 Max capacity at full height kg 2700
 Max capacity at full reach kg 1180
 Tear-out force with 800 lt bucket (SAE J732/80) kg 4230
 Drawbar pull kg 4875
 Carriage rotation deg 140

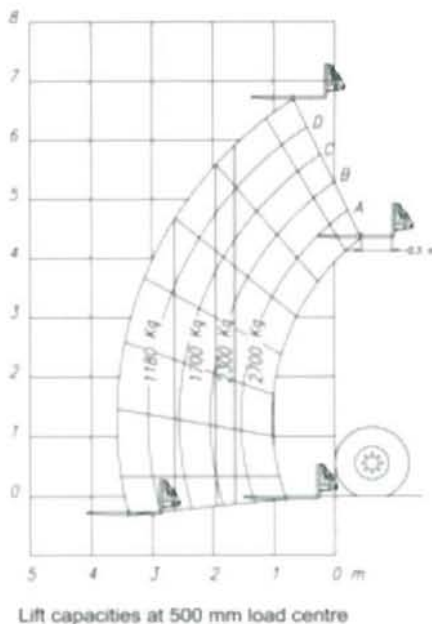
OPERATING TIMES

Boom lift sec 8
 Boom lower sec 7
 Boom extend sec 6
 Boom retract sec 6
 Full carriage tilt sec 5
 800 lt bucket dump sec 1.5

TRAVEL SPEED

Working speed (1st gear) km/h 7
 Road speed (2nd gear) km/h 25

LIFT CAPACITY P 27.7 EV



OPERATOR'S CAB

Structure complies with EEC directives 86/295 (ROPS) and 86/296 (FOPS). The cab is mounted on rubber antivibration blocks and is fitted with noise dampening panels.

Front screen is fitted with a wiper and can be opened for additional ventilation.

Boom and carriage is operated by two "2 in 1" joystick levers.

Instrumentation includes: Tachometer/Revolution counter, hour meter, fuse box, check-control panel showing oil level, blocked engine air filter, hydrostatic oil level, engine oil pressure, coolant temperature, parking brake warning light.

Also as standard is a cab heater/demister/pressurisation system and a courtesy light.

SAFETY SYSTEMS

A safe load warning device giving both audio and visual signals is activated by a load sensor housed in the rear axle when the forward stability of the machine is reaching overload.

Safety lock valves are incorporated into the boom telescope and carriage tilt circuits to avoid accidents in the event of a hydraulic system failure. A reversing bleeper is fitted and an audible warning is given if the handbrake is left on.

BOOM

A two sections boom made from high yield steel and telescoping on anti friction externally adjusted pads. The extension cylinder is protected from damage by mounting inside the boom.

CARRIAGE

A "TAC-LOCK" carriage (for attachment of equipments

from inside the cab), is fitted with two hydraulic service lines (one double acting service).

STEERING

Hydraulically powered, three modes selected from the cab, provide:

- All wheel steer
- Front wheel only steer
- Crab steer

ENGINE

4 cylinder PERKINS 1000 series Diesel engine with direct injection and water cooling 62 kw (84 Hp) at 2400 rpm (DIN 70020).

TRANSMISSION

Hydrostatic closed circuit type with stepless speed regulation.

A variable delivery pump directly connected to the Diesel engine drives a fixed displacement motor directly flanged to the two speed gearbox.

Permanent four wheel drive through differential and hub reduction gears.

Front axle is mounted rigidly, the rear axle oscillates. Dropped hubs of the crown and pinion reduction type for improved ground clearance.

BRAKES

Hydraulically activated disc brakes on all four wheels, mounted on differential output shafts.

Mechanical parking disc brake, self adjusting, on main propshaft.

SERVICE HYDRAULICS

Gear pump.
 Maximum flow: 87 lt/min

Operating pressure: 210 bar
 125 micron "FOR LIFE" strainer on suction line
 40 micron filter on return line.

ELECTRICS

12 volt system with 110 Ah battery and 55 Amp alternator.
 Full road lighting and flashing beacon.

CAPACITIES

Hydraulic oil : 95 lt
 Diesel fuel: 155 lt
 Hydrostatic oil : 8 lt
 Engine oil : 7.5 lt
 Coolant: 12.5 lt

TYRES

380/70 x 24" 10 PR.
 Mounted on 8 stud disc rims (DIN 70361).

OPTIONS

A wide range of options include:
 Turbo charged engine 84 kw (114 HP) at 2400 rpm (DIN 70020).

Roof window and rear screen wipers.
 40 kph high speed transmission.

Front screen guard.
 "4 in 1" electroproportional joystick.

Rear differential lock.
 Engine sump guard.

ATTACHMENTS

A comprehensive range of attachments for construction industry, agriculture and industrial applications is available.

Contact your local dealer for details.

MERLO

MERLO UK LIMITED 82 Christchurch Road - RINGWOOD - HAMPSHIRE - BH24 1DR - ENGLAND Tel. (0425) 480806 - Fax (0425) 477478

MERLO SPA Industria Metallmeccanica 12020 S. DEFENDENTE DI CERVASCA (CN) - ITALY Tel. + 39 171-85671 - Fax + 39 171-320009 Telex 220236 MERLO I