



THE EUROPEAN LEADER IN HANDLER DESIGN

- PANORAMIC 360° VISIBILITY
- HYDROSTATIC DRIVE WITH INCHING PEDAL
- THREE MODE STEERING
- DOUBLE ACTION CONTROLS
- LUXURY 'SILENT BLOCK MOUNTED' CAB
- HIGH GROUND CLEARANCE
- LOW CENTRE OF GRAVITY
- UPTO 40 K.P.H. ROAD SPEED
- FRAME LEVELLING
- 2500 Kg CAPACITY
- 9.16 m LIFT HEIGHT
- 5.95 m OUTREACH
- 84 HP OR 114 HP PERKINS ENGINE
- BOOM SIDE-SHIFT
- REMOTE LOCKING OF ATTACHMENTS

ALL WITHIN
A RING
OF STEEL



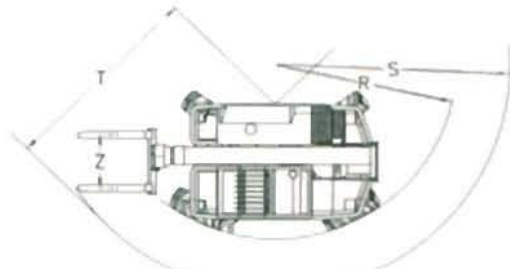
PANORAMIC P 25.9 EVS - EVN

A	mm	4225
B	mm	1005
C	mm	2650
D	mm	570
E	mm	3755
F	mm	480
H	mm	2220
M	mm	930
P	mm	2440
R	mm	3810
S	mm	4570
T	mm	3610
Z	mm	850

DIMENSIONS



OUTSTANDING MANOEUVRABILITY



WEIGHTS

Machine weights with forks kg 7100

PERFORMANCES

Max. lift capacity	kg	2500
Max. lift height	mm	9160
Max. reach	mm	5950
Max. height at full capacity	mm	7000
Max. reach at full capacity	mm	1900
Max. capacity at full height	kg	2000
Max. capacity at full reach	kg	500
Tear-out force with 800 lt bucket (SAE J732/80)	kg	4230
Drawbar pull	kg	5850
Carriage rotation	deg	140

OPERATING TIMES

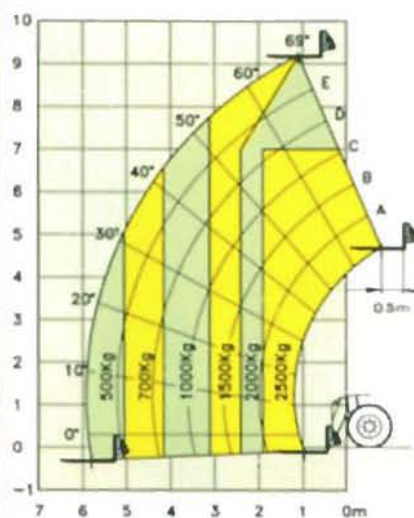
Boom lift	sec	8.5
Boom lower	sec	7.5
Boom extend	sec	9
Boom retract	sec	8
Full carriage tilt	sec	5
800 lt bucket dump	sec	1.5

TRAVEL SPEED

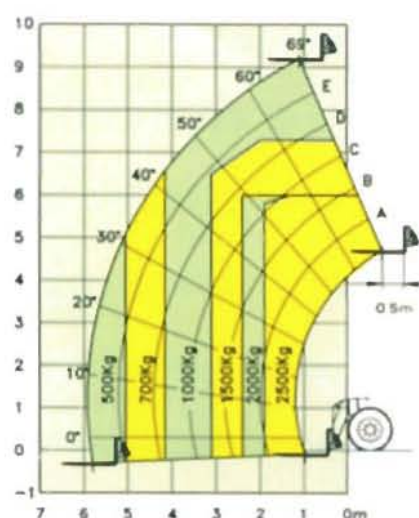
1st gear	kph	7
2nd gear	kph	24

***P 25.9 EVN max. capacity at full height = kg 1000

P 25.9 EVS



P 25.9 EVN



Lift capacities at 500 mm load centre (FEM 4001r)

OPERATOR'S CAB

Structure complies with EEC directives 86/295 (ROPS) and 86/296 (FOPS).

The cab is mounted on rubber antivibration blocks and fitted with noise dampening panels.

Front screen is fitted with a wiper and can be opened for additional ventilation. Boom and carriage are operated by "2 in 1" joystick levers.

Instrumentation includes: Tachometer/Revolution counter, hour meter, fuse box, check-control panel showing blocked engine air filter, hydrostatic oil level and temperature, engine oil pressure, coolant temperature, parking brake warning light. Centralized pressure test gauge. Also as standard is a cab heater/demister/pressurisation system and a courtesy light.

SAFETY SYSTEMS

A safe load warning device activates both audio and visual signals and locks overloading actions.

Automatic lock of frame levelling when boom exceeds the safety angle.

Safety lock valves are incorporated in all hydraulic cylinders. A reversing bleeder is fitted and an audible warning is given if the handbrake is left on.

Remote engine hood lock.

BOOM SIDE-SHIFT

A MERLO patented chassis side-shift is fitted allowing +/- 110 mm of carriage side-shift with boom fully retracted or +/- 265 mm if boom is fully extended.

BOOM

A three section boom made from high yield steel and telescoping on anti friction externally adjusted pads.

The double extension cylinder is protected by mounting inside the boom.

CARRIAGE

A "TAC-LOCK" carriage (for attachment of equipments from inside the cab), is fitted with two hydraulic service lines making a double acting service.

FRAME LEVELLING (EVS)

A hydraulic activated tilt device allows chassis and boom levelling under any ground conditions. Its action can be combined with that of stabilizers.

PALLET FORKS

1200 mm long, section 130 x 45 mm. Centre to centre fork distances, hand adjustable, from 450 to 1050 mm.

STEERING

Hydraulically powered, three modes:

- All wheel steer
- Front wheel only steer
- Crab steer

ENGINE

4 cylinder PERKINS 1004-4 Diesel engine with direct injection and water cooling 62 kW (84 Hp) at 2400 rpm (DIN 70020).

TRANSMISSION

Hydrostatic closed circuit type with automatic stepless speed regulation. Inching pedal. Two speed gearbox. Permanent four wheel drive through differential and hub reduction gears. Front axle is mounted rigidly, the rear axle oscillates. Dropped hubs of the crown and pinion reduction type for improved ground clearance.

BRAKES

Hydraulically activated disc brakes on all four wheels, mounted on differential output shafts. Mechanical

parking disc brake, self adjusting, on main propshaft.

SERVICE HYDRAULICS

Gear pump. Maximum flow: 80 l/min

Operating pressure: 210 bar

125 micron "FOR LIFE" strainer on suction line

40 micron filter on return line.

ELECTRICS

12 V system with 110 Ah battery and 65 A alternator.

Full road lighting and flashing beacon.

CAPACITIES

Hydraulic oil : 95 l - Diesel fuel: 155 l

Hydrostatic oil : 8 l - Engine oil : 7.5 l

Coolant: 12.5 l

TYRES

16/70 x 20" 10 PR.

Mounted on 8 stud disc rims (DIN 70361).

OPTIONS

A wide range of options includes:

Turbo charged engine 84 kW (114 HP) at 2400 rpm (DIN 70020) and 40 kph high speed transmission.

Rear differential lock. Rear PTO. Front stabilizers.

12.5 x 20" 10 PR tyres (width H = 2140 mm).

"4 in 1" electroproportional joystick. Roof window and rear screen wipers. Front screen guard.

Pre-arrangement for rear excavator and mixing shovel.

ATTACHMENTS

A comprehensive range of attachments for the construction industry, agriculture and industrial applications is available. Contact your local dealer for details.

MERLO

MERLO UK LIMITED

82 Christchurch Road - RINGWOOD - HAMPSHIRE - BH24 1DR - ENGLAND

Tel. (0425) 480806 - Fax (0425) 477478

MERLO SPA Industria Metallmeccanica

12020 S. DEFENDENTE DI CERVASCA (CN) - ITALY

Tel. + 39 171-85671 - Fax + 39 171-320009 - Telex 220236 MERLO I