

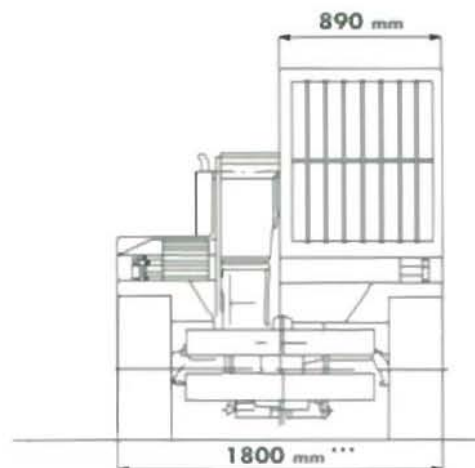
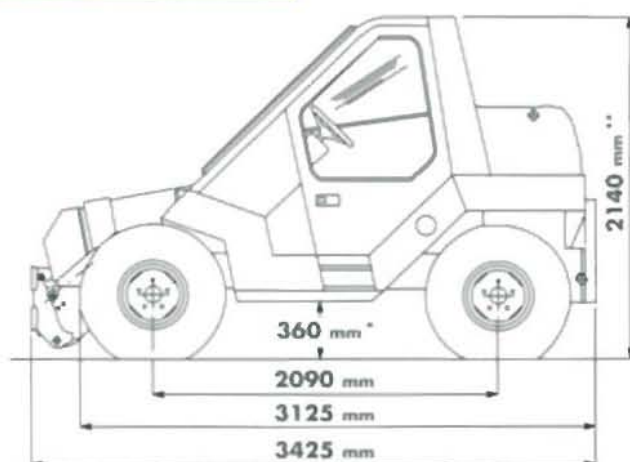
AGRIPANORAMIC



P 20.6 sc

 **MERLO**

P 20.6 SC

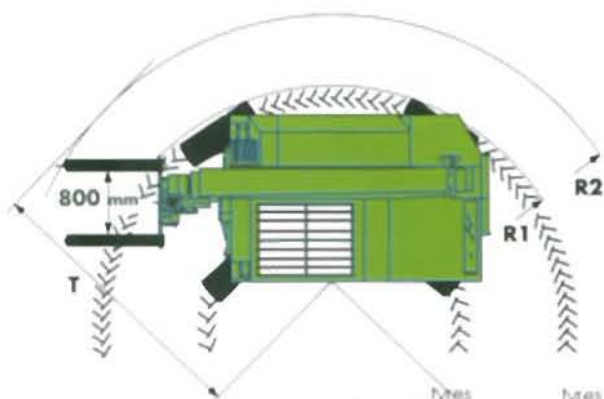


- * with tyres 11,5/80 x 15" (340 mm with tyres 12 x 16,5")
- ** with tyres 11,5/80 x 15" (2120 mm with tyres 12 x 16,5")
- *** with tyres 11,5/80 x 15" (1875 mm with tyres 12 x 16,5")

STEERING



ALL WHEEL STEERING FRONT WHEEL STEERING CRAB STEERING



	tyres 12 x 16,5"	tyres 11,5/80 x 15"
R2 Max. steering radius (with forks)	mm 3 640	mm 3 625
R1 Max. steering radius (to external wheels)	mm 2 950	mm 2 900
T Track width	mm 3 000	mm 3 000

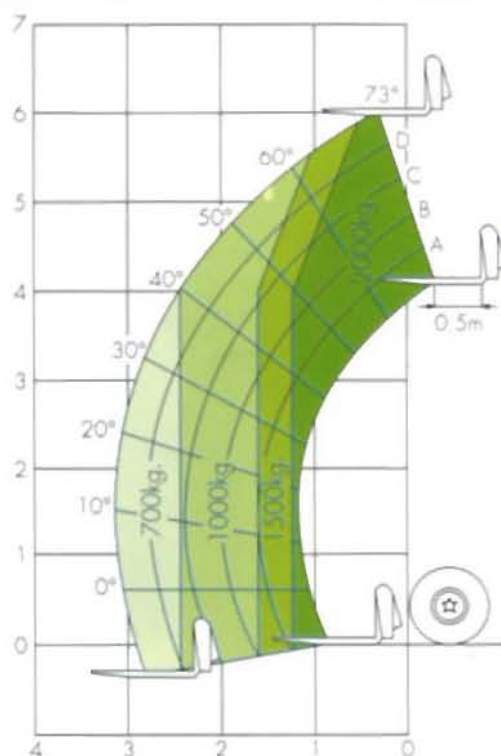
OPERATING TIMES

Boom lift	sec.	7
Boom lower	sec.	5
Boom extended	sec.	6
Boom retract	sec.	4
Full carriage tilt (152°)	sec.	2,5
Bucket dump (67°)	sec.	0,8

TRAVEL SPEED

On site (1st gear)	Km/h	10
On road (2nd gear)	Km/h	20

LIFT CAPACITIES



Lift capacities with load at 500mm centres, conforms to draft EEC regulations - FEM 4.001r and ISO DIS 8379.

PERFORMANCE DATA

Max lift capacity	kg	2.000
Max lift height	mm	6.020
Max reach	mm	3.120
Max height at full capacity	mm	6.020
Max capacity at full height	kg	2.000
Max capacity at full reach	kg	700
Break-out force with 450 lt bucket	kg	3.050
Towing capacity	kg	2.250
Carriage tilting	°	1,52
Machine weight (with forks)	kg	4.050

P 20.6 SC

ENGINE

PERKINS 4 cylinder diesel, type 504 2T, turbo charged, direct injection, water cooled giving a power output of 38 kw (52 HP) at 2600 RPM (EEC 88/195).

TRANSMISSION

HYDROSTATIC with stepless speed control, closed circuit.

Variable displacement pump, "automotive" type, which is directly coupled to the engine. 10 micron filter on suction line.

Two variable displacement hydraulic motors give travel speeds of 10 kph working and 20 kph on the road. On the move speed change. Two steering axes, front rigid, rear oscillating. Helical type hub reduction gears.

STEERING

Four wheel hydrostatic full power with three modes:

- All wheel steer - for normal working.
- Front wheel steer - for on the road.
- Crab steer - to get you in and out of those awkward places.

BRAKES

Oil immersed disc for normal operation and emergency braking, double circuit.

Mechanical parking brake on the main propshaft.

TYRES

12 x 16,5" 8 ply on all four wheels.

Wheels mounted with 5 studs each (DIN 74361). Optional: 11,5/80 x 15".

ELECTRICS

12 Volt system, 80 Amp hour battery; 55 Amp alternator.

Full road lighting.

HYDRAULICS

Double gear pump 15 + 15 cube cm/per cycle with capability to combine output to feed services.

180 bar operating pressure.
40 micron filter on return line.

TANK CAPACITIES

Hydraulic Oil	95 lt.
Fuel	75 lt.
Engine Oil	6 lt.

BOOM

Double telescopic boom of high tensile steel, sliding on anti-friction fully adjustable pads. Internal rams.

CARRIAGE

Quick-hitch carriage operated from within the cab, two hydraulic services to boom end (one double acting).

FORKS

1.000 mm long x 130 mm wide x 35 mm thick. Centre to centre fork width adjusted by hand from 130 mm to 800 mm.

SAFETY DEVICES

Safety lock valves on boom lift, telescope and tilt rams. Longitudinal stability audio/visual warning device.

CAB

Manufactured and certificated to EEC 86/295 (ROPS) and EEC 86/296 (FOPS) directives.

Boom and carriage operated by single lever control. Instruments include: engine air filter blocked warning, hour meter, fuel gauge, fuse box, coolant temperature, battery charge, engine oil pressure, crab steering control, and parking brake warning light.

STANDARD EQUIPMENT

FEM II carriage.
Front screen guard.
Rotating flashing beacon

OTHER OPTIONS

Safe load system indicator with automatic lockout when boom exceeds safe angle.

- Safe load system indicator with continuous monitoring of forward stability.
- Electrohydraulic installation for man platform.
- Hydraulic rear pickup hitch.
- Rear PTO with three point linkage.
- Cab and/or boom mounted working lights.

ATTACHMENTS

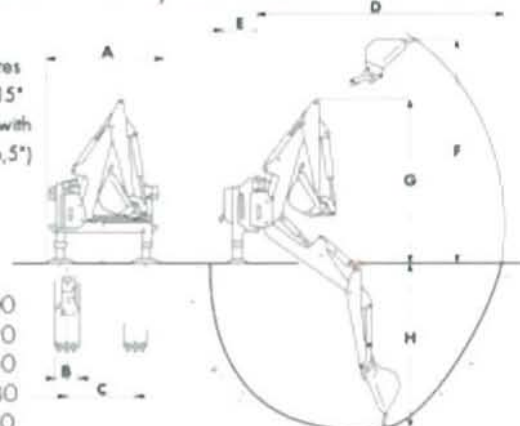
A full range of agricultural attachments are available for mounting on both the front and rear of the machines.

P 20.6 SCR WITH FACTORY FITTED BACK HOE*

The versatile P 20.6 is also available as a purpose built back-hoe loader. The digging operator position incorporates a Merlo patented system to raise the cab at the rear of the machine by 180 mm, which gives a comfortable and roomy environment.



** with tyres
11,5/80x15"
(2300 mm with
tyres 12x16,5")



A Max width	mm 2.000
B Bucket width	mm 250
C Distance between excavation center	mm 1.000
D Max reach	mm 3.650
E Attachment distance	mm 325

F Excavation max. height	mm 2.900
G Folder arm max. height	mm 2.320
H Excavation max. depth	mm 3.030
Rotation	° 180
Break out force	kg 3.050
Working pressure	bar 190
Back hoe weight	kg 700

*OPTIONAL

By simply turning the drivers seat over and hydraulically raising the roof of the cab the high performance telescopic loader is converted into a first class digging machine. The operators view of the digging equipment is unobstructed and full offset of the back-hoe can also be achieved, without loss of visibility.